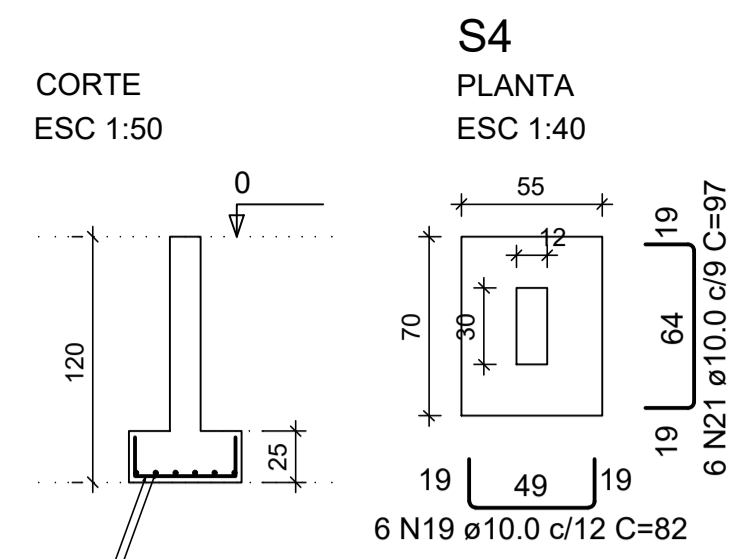
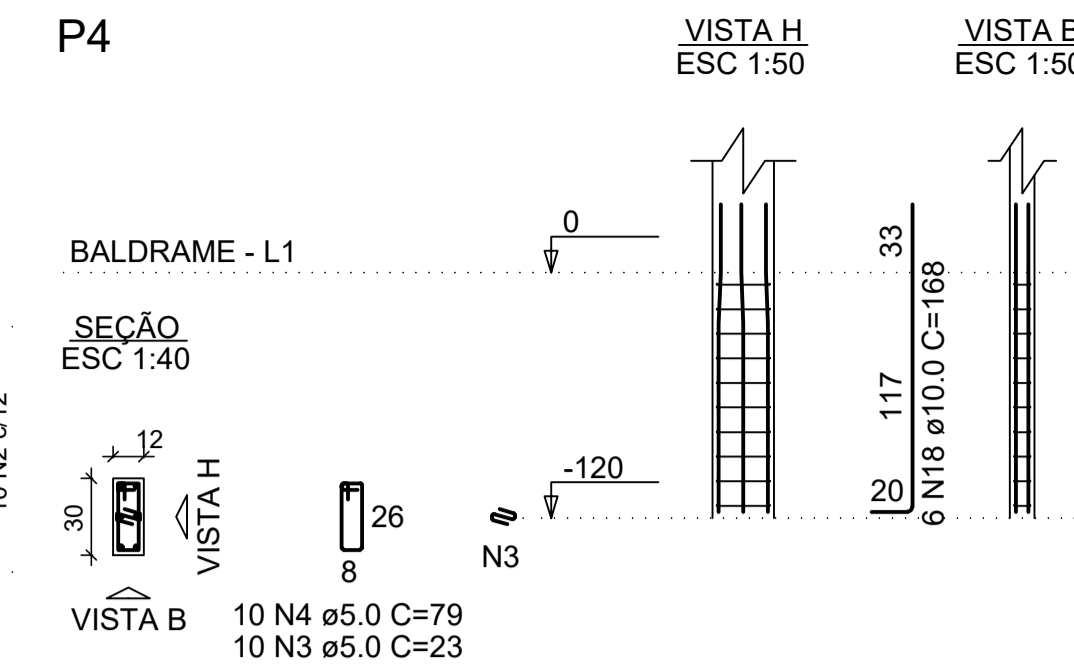
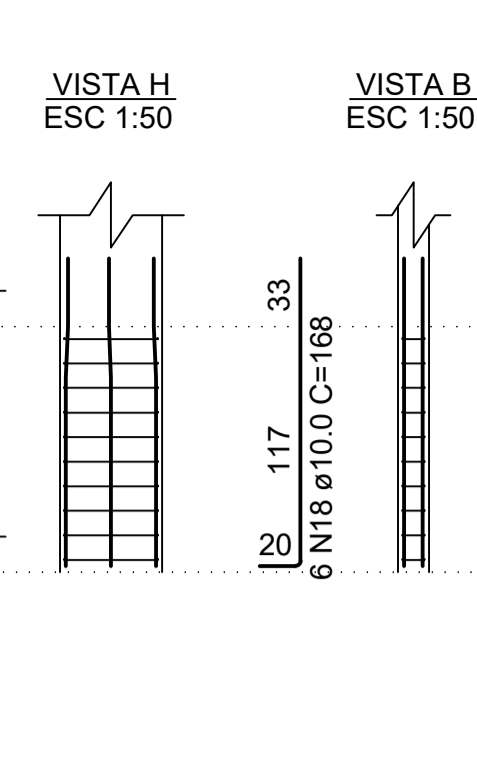
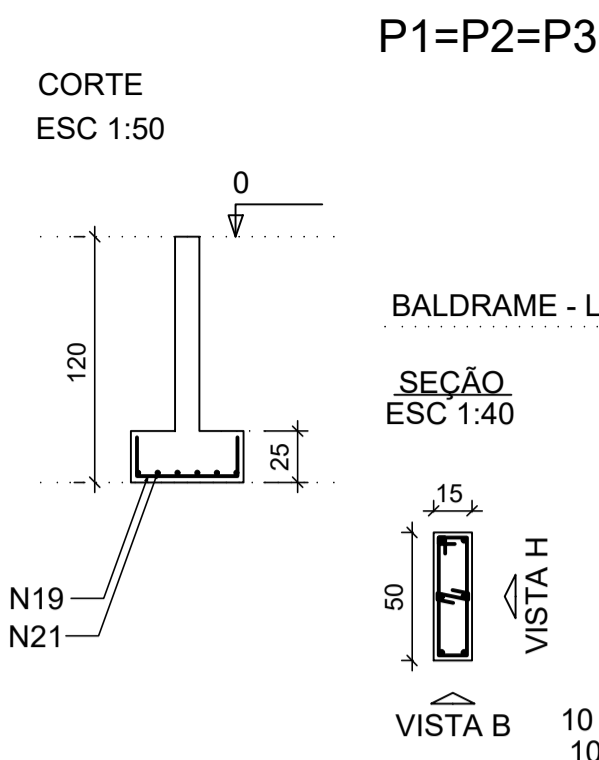


Solo com capacidade de suporte > 1.60 kgf/cm<sup>2</sup>  
Solo compactado sobre a sapata  
peso específico > 1600.00 kgf/m<sup>3</sup>

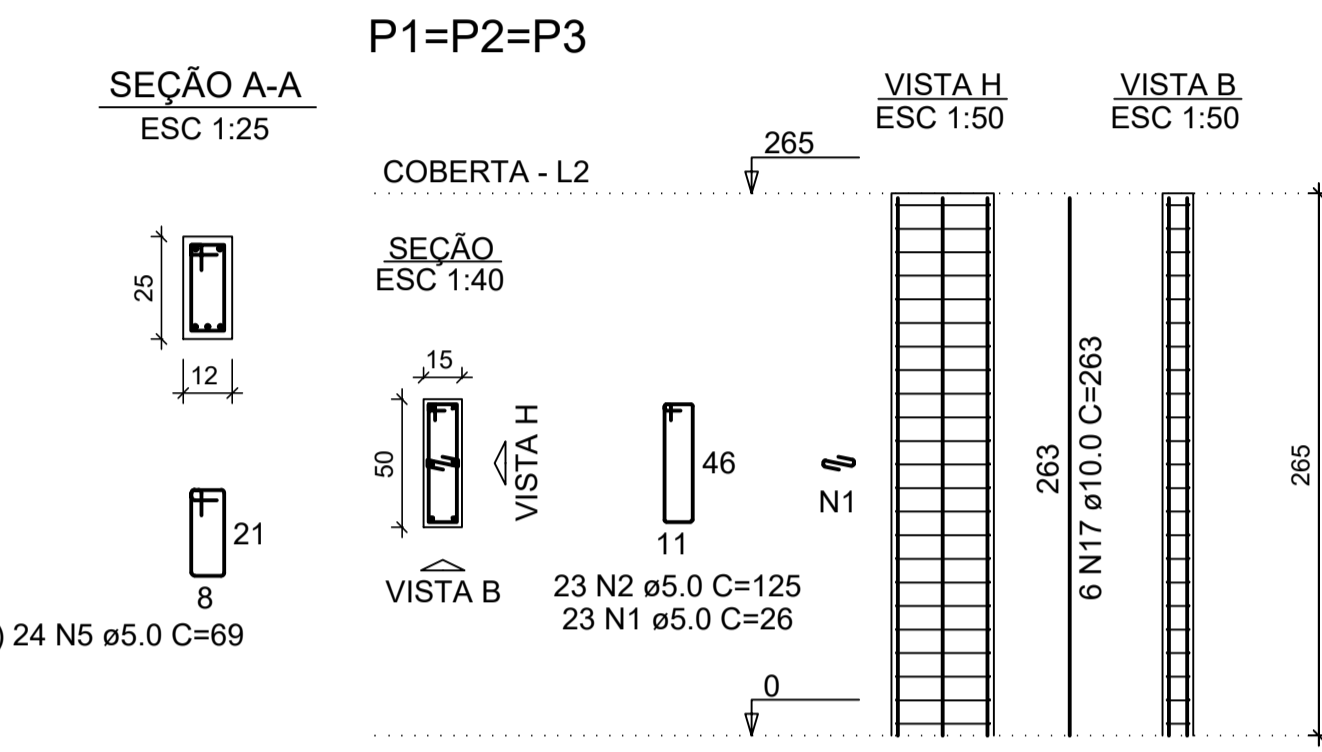
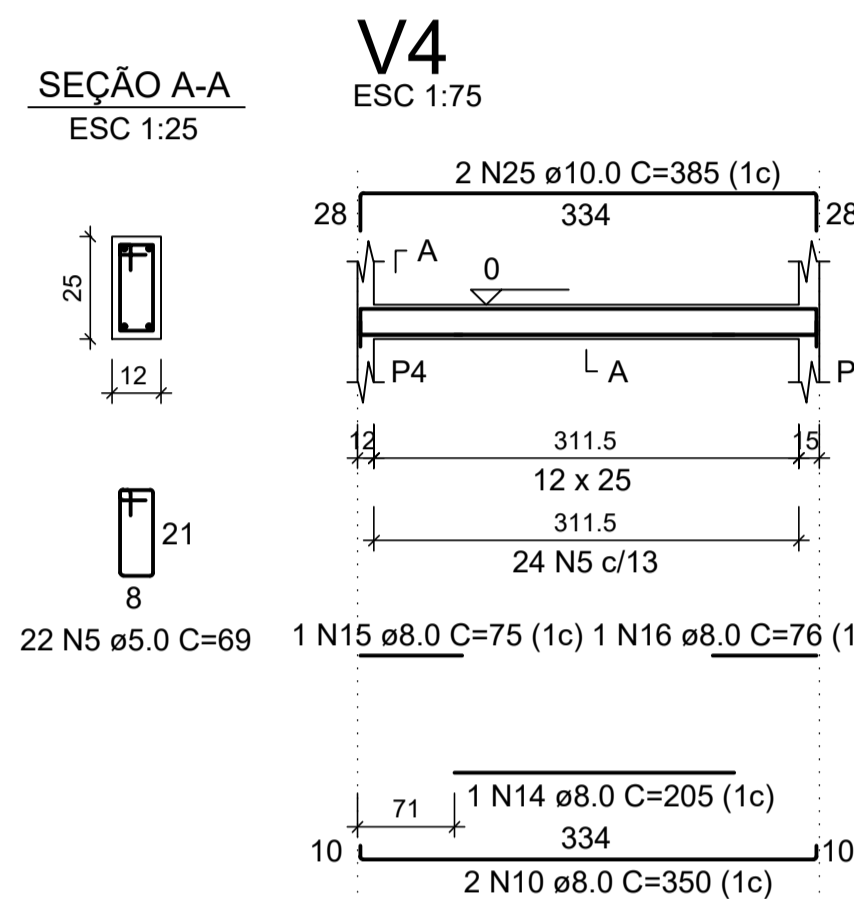
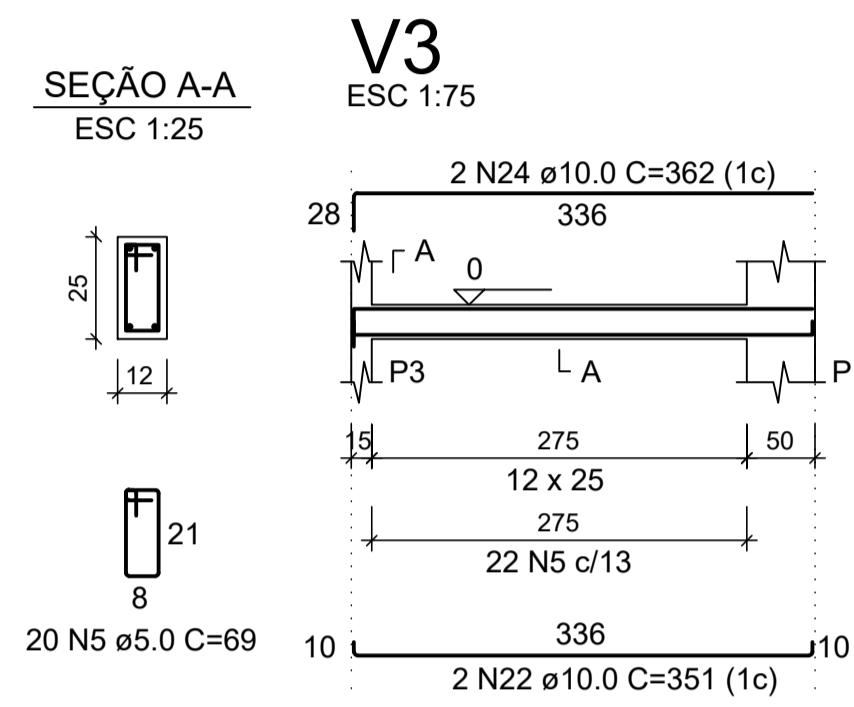
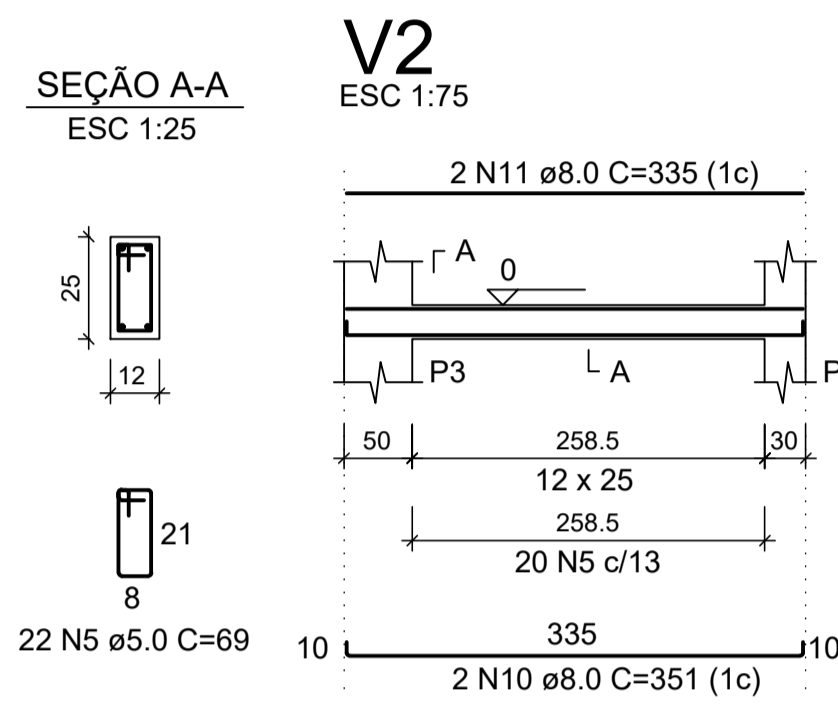
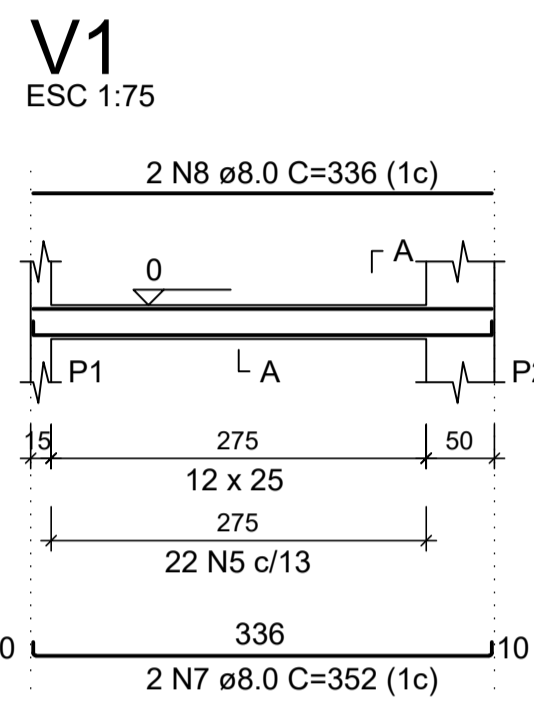


Solo com capacidade de suporte > 1.60 kgf/cm<sup>2</sup>  
Solo compactado sobre a sapata  
peso específico > 1600.00 kgf/m<sup>3</sup>



RELAÇÃO DO AÇO

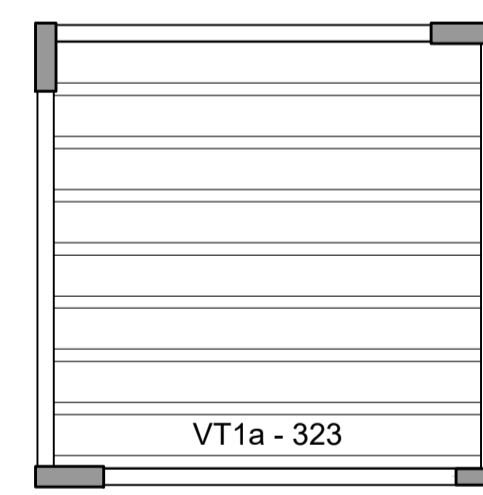
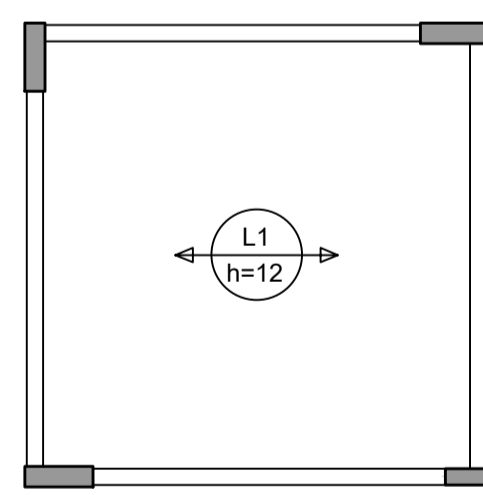
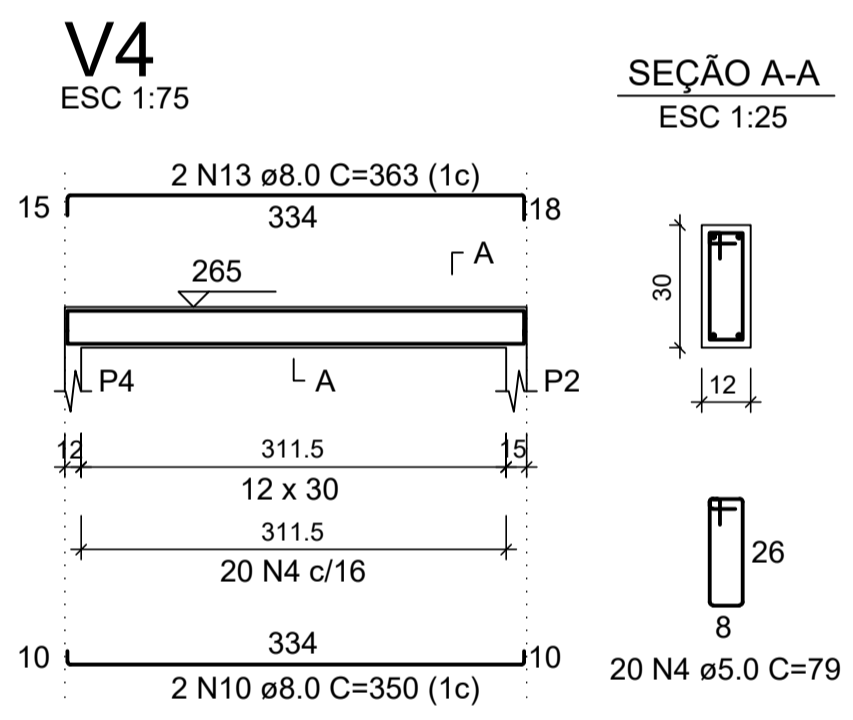
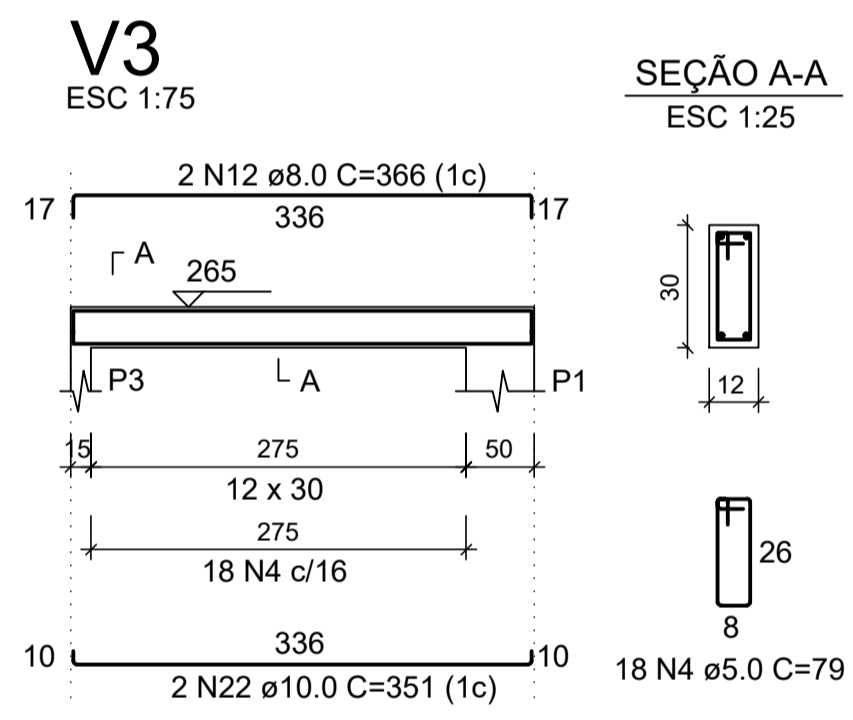
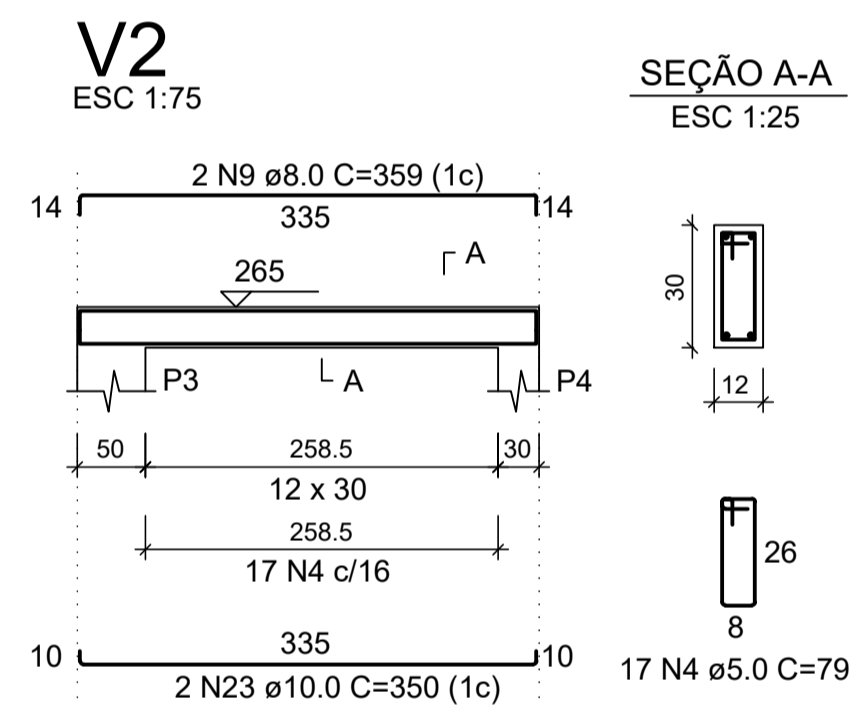
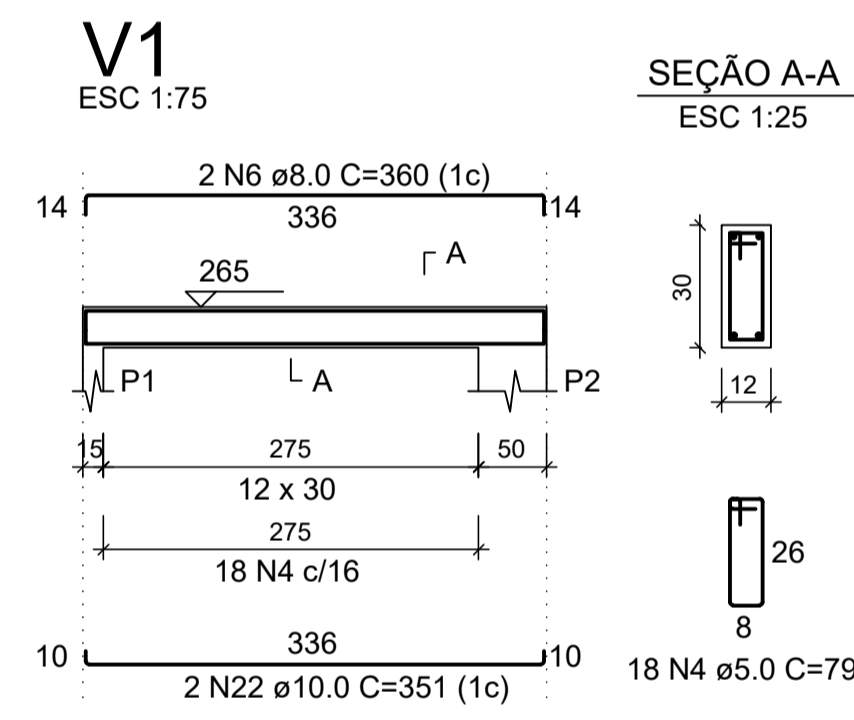
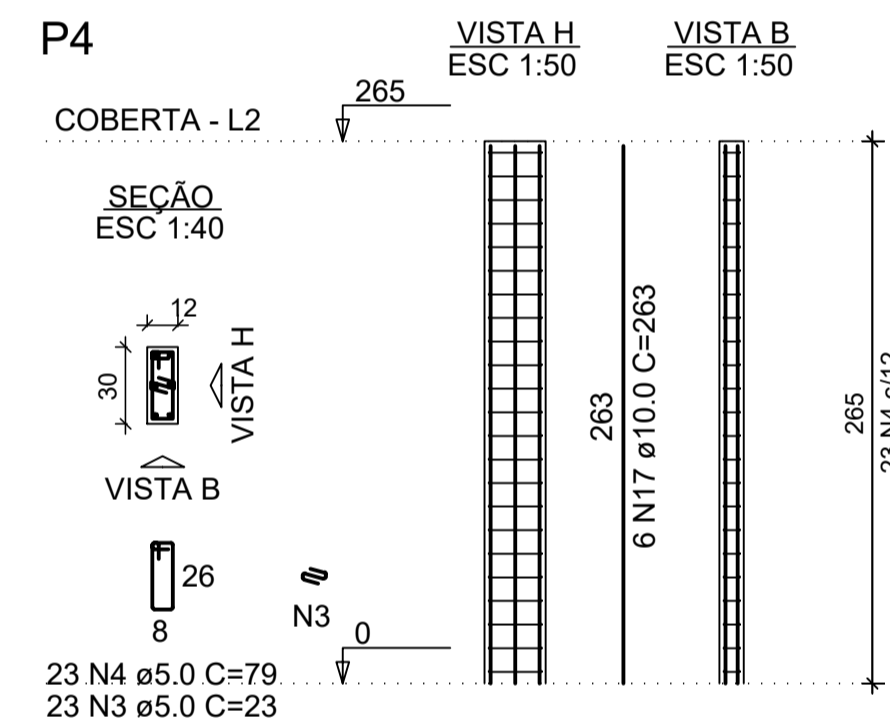
AÇO N	DIAM (mm)	QUANT (cm)	UNIT (cm)	C.TOTAL (cm)	
CA60	1	5.0	99	26	2574
	2	5.0	99	125	12375
	3	5.0	33	23	759
	4	5.0	106	79	8374
CA50	5	5.0	88	69	6072
	6	8.0	2	360	720
	7	8.0	2	352	704
	8	8.0	2	336	672
	9	8.0	2	359	718
	10	8.0	6	351	2106
	11	8.0	2	335	670
	12	8.0	2	366	732
	13	8.0	2	363	726
	14	8.0	1	205	205
	15	8.0	1	75	75
	16	8.0	1	76	76
	17	10.0	24	263	6312
	18	10.0	24	168	4032
	19	10.0	24	82	1968
	20	10.0	18	117	2106
	21	10.0	6	97	582
	22	10.0	6	351	2106
	23	10.0	2	350	700
	24	10.0	2	362	724
	25	10.0	2	385	770



RESUMO DO AÇO

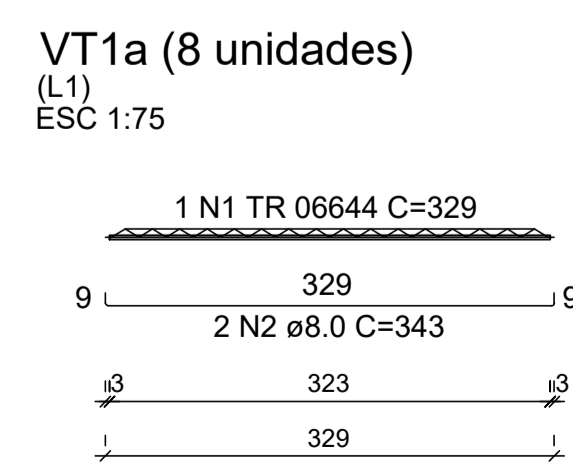
AÇO	DIAM (mm)	C.TOTAL (m)	QUANT + 10% (Barras)	PESO + 10% (kg)
CA50	8.0	74	7	32.1
CA60	10.0	193	18	130.9
CA60	5.0	301.5	28	51.1
<b>PESO TOTAL (kg)</b>				
CA50				163
CA60				51.1

Volume de concreto (C-30) = 2.88 m<sup>3</sup>  
Área de forma = 39.23 m<sup>2</sup>



Armação positiva das lajes do pavimento Coberta Planta de vigotas pré-moldadas

FERRAGEM ADICIONAL DAS VIGOTAS (TRELIÇAS)



RELAÇÃO DO AÇO

AÇO N	DIAM (mm)	QUANT	C.UNIT (cm)	C.TOTAL (cm)	
CA60	1	TR 06644	8	329	2632
CA50	2	8.0	16	343	5488

RESUMO DO AÇO

AÇO	DIAM (mm)	C.TOTAL (m)	QUANT + 10% (Barras)	PESO + 10% (kg)
CA50	8.0	54.9	6	23.8
CA60 TR 06644		26.3	-	20.6
<b>PESO TOTAL (kg)</b>				
CA50				23.8
CA60				20.6

Volume de concreto (C-30) = 0.00 m<sup>3</sup>  
Área de forma = 0.00 m<sup>2</sup>

Endereço: Praça dos Três Poderes, Número 141 - Centro, Petrolândia - PE - CEP 56460-000  
Tel. (87) 3851-1156  
CNPJ: 10.106.235/0001-16

SERVIÇO: CABINE DE PESAGEM BALANÇA RODOVIÁRIA  
LOCAL: AVENIDA DJALMA WANDERLEY, PETROLÂNDIA/PE

DESENHISTA: BERNARDO SILVA  
RESPONSÁVEL TÉCNICO:  
ÁREAS: Construída: 9,49 m<sup>2</sup>  
DATA: Setembro 22

CONTEÚDO: ESTRUTURAL - CORTES E DETALHES

ESCALA: INDICADA APROVAÇÃO: FOLHA: 02/04

ESTRUTURAL

PORTAL DA TRANSPARÊNCIA