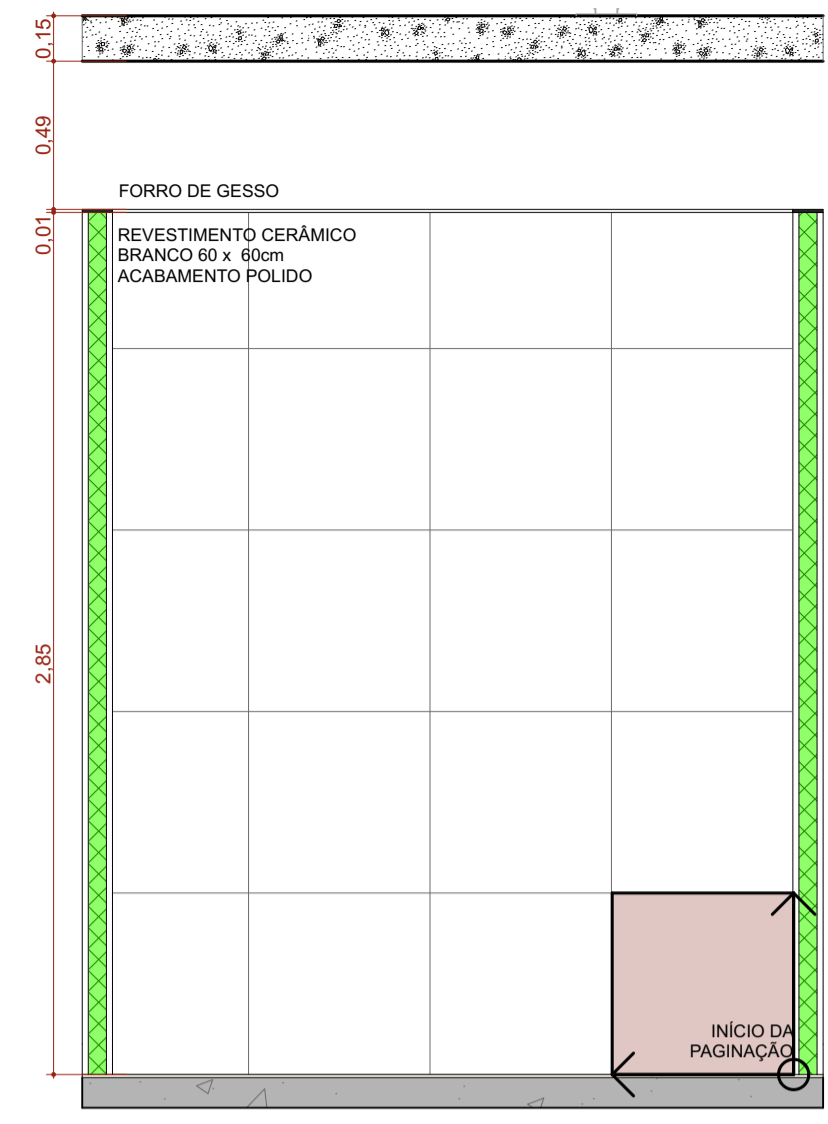


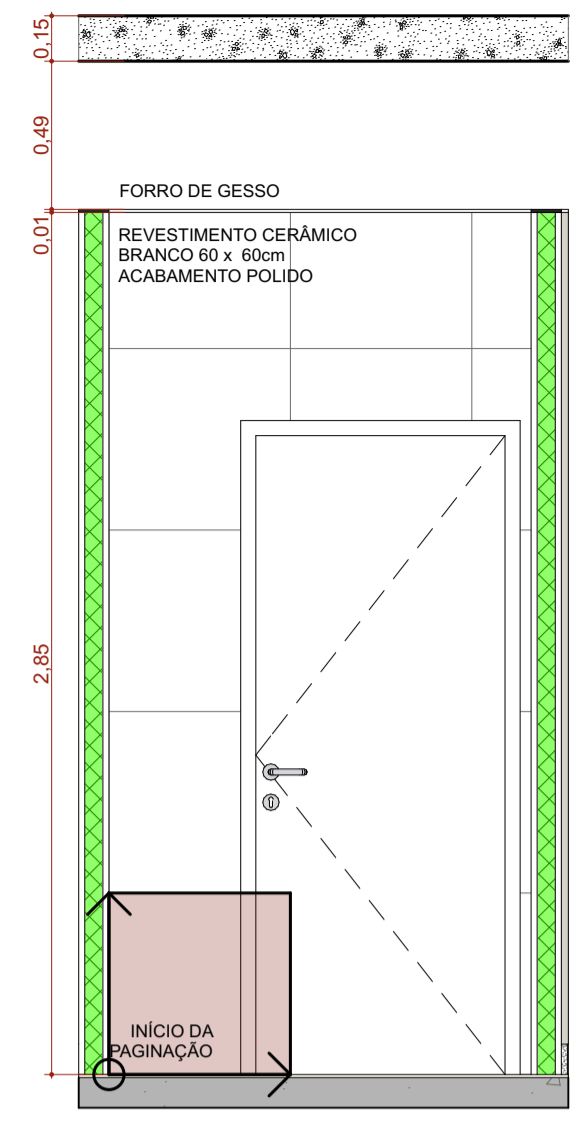
A.M.7 DML

Escala:1:25



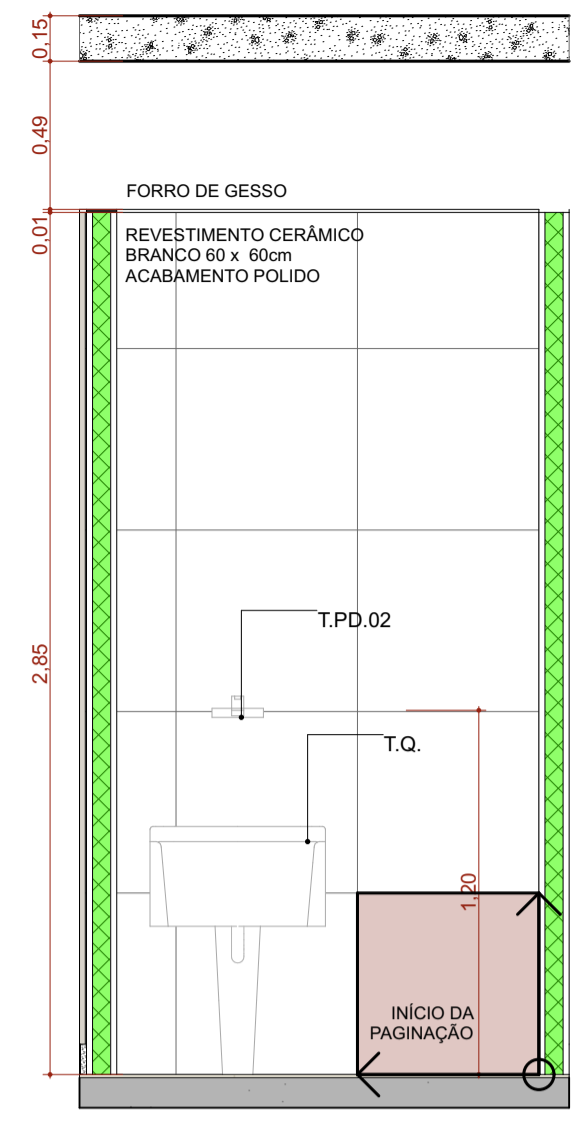
A.M.07 VISTA 1

Escala:1:25



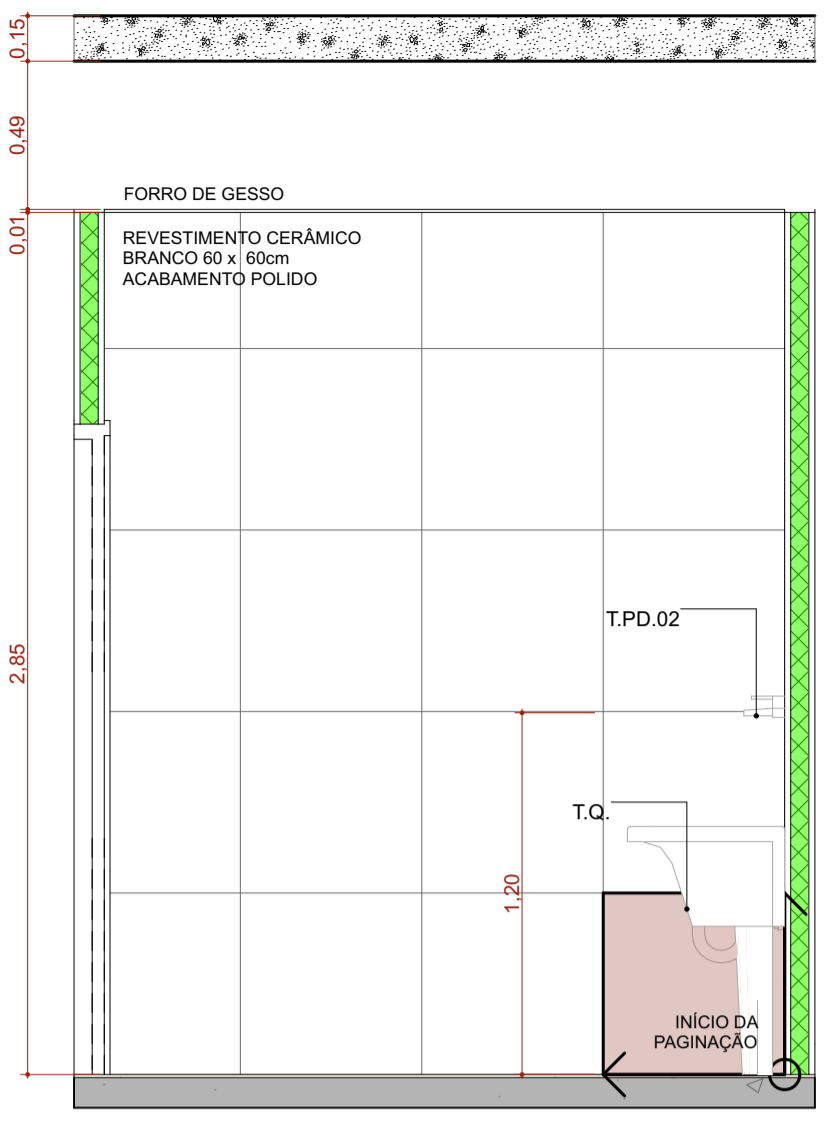
A.M.07 VISTA 2

Escala:1:25



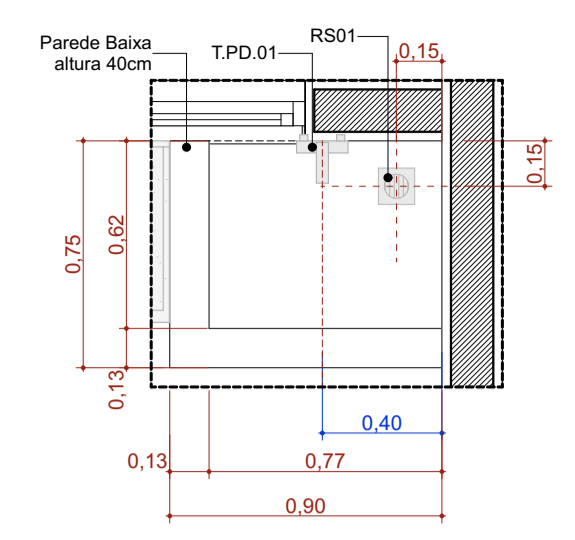
A.M.07 VISTA 3

Escala:1:25



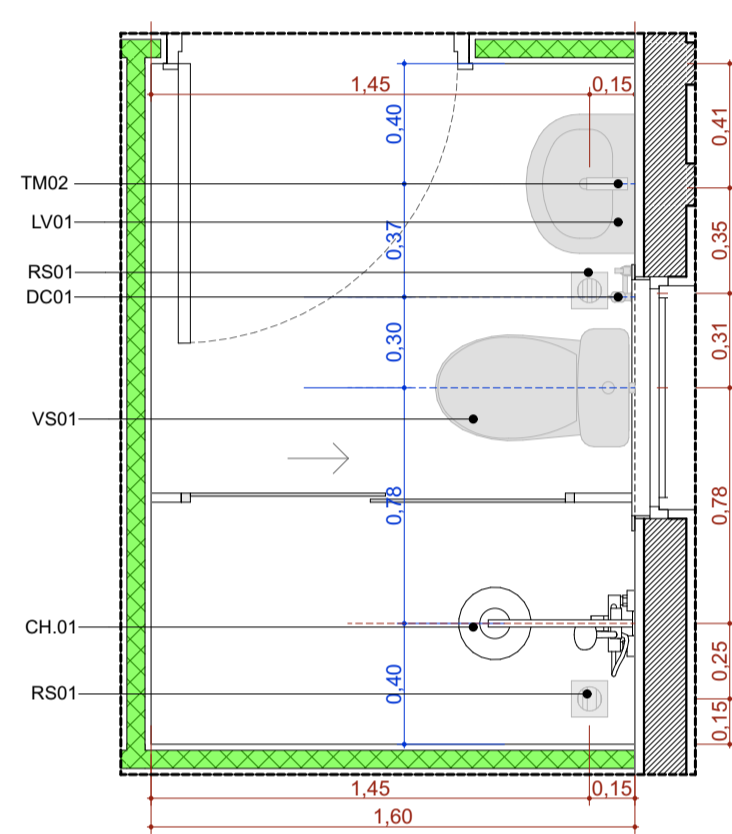
A.M.07 VISTA 4

Escala:1:25



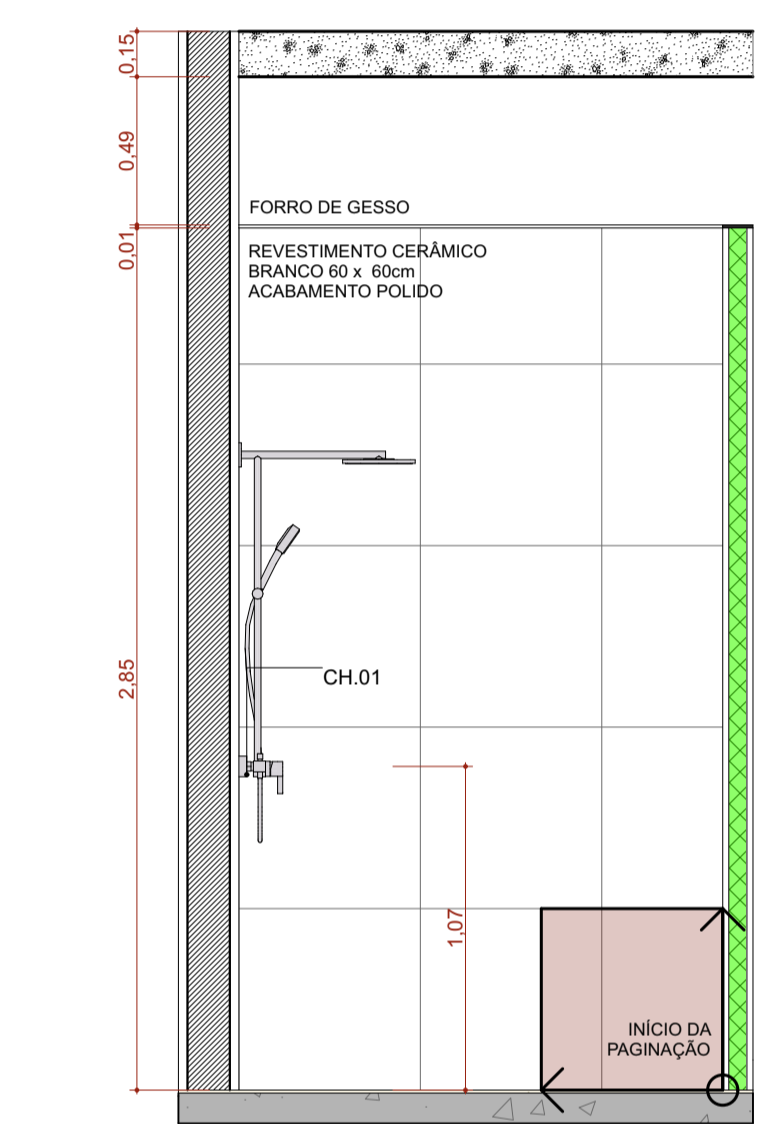
A.M.10 Higienização dos pés

Escala:1:25



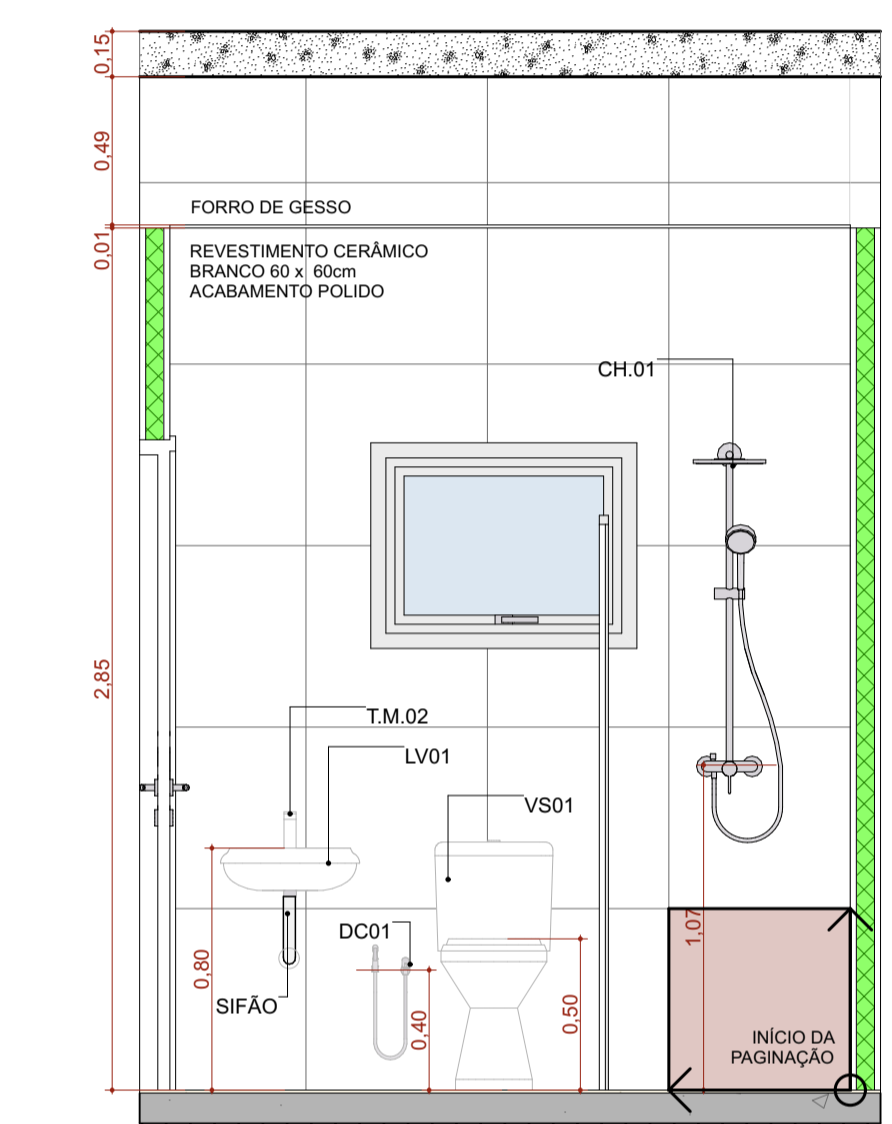
A.M.8 Banh. Func. Masc.

Escala:1:25



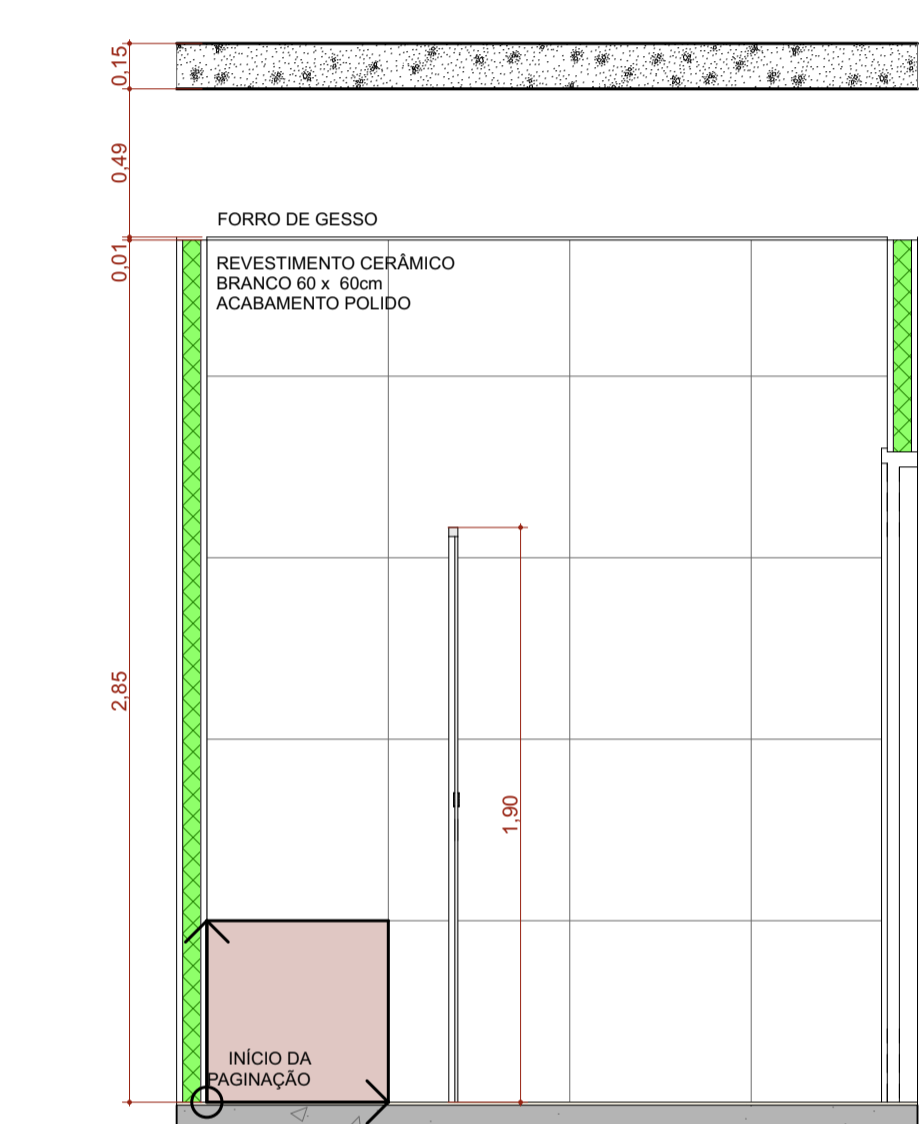
A.M.08 VISTA 1

Escala:1:25



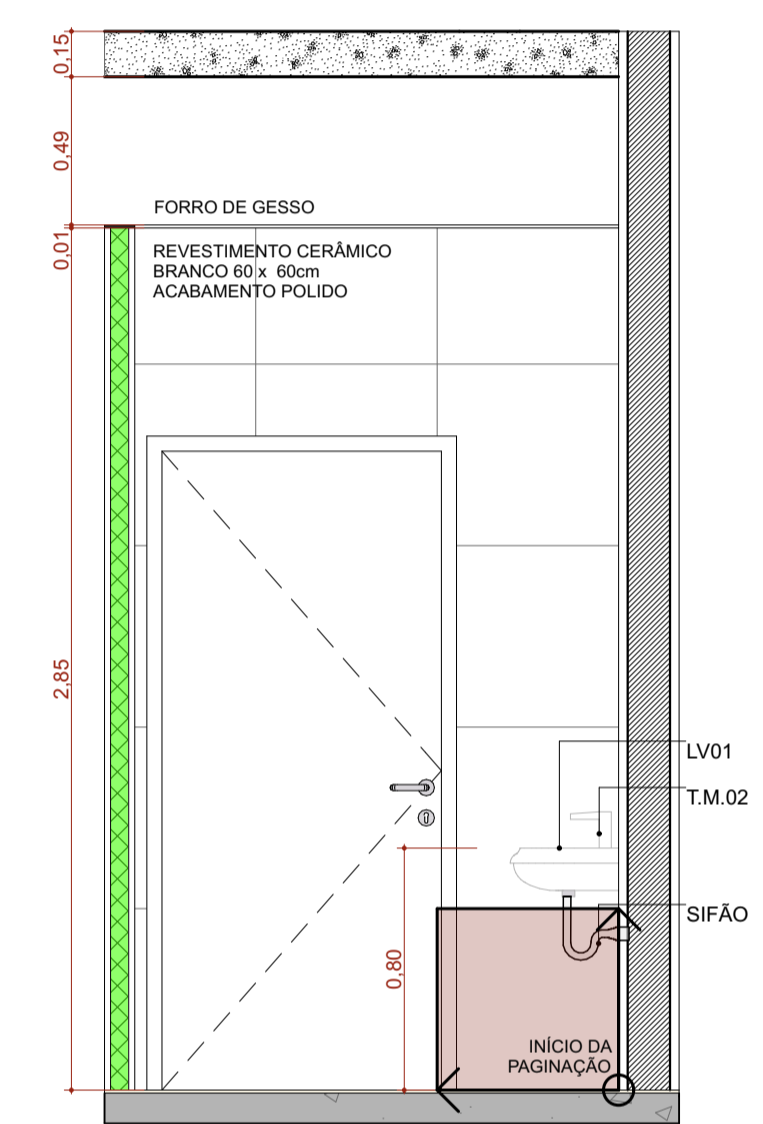
A.M.08 VISTA 2

Escala:1:25



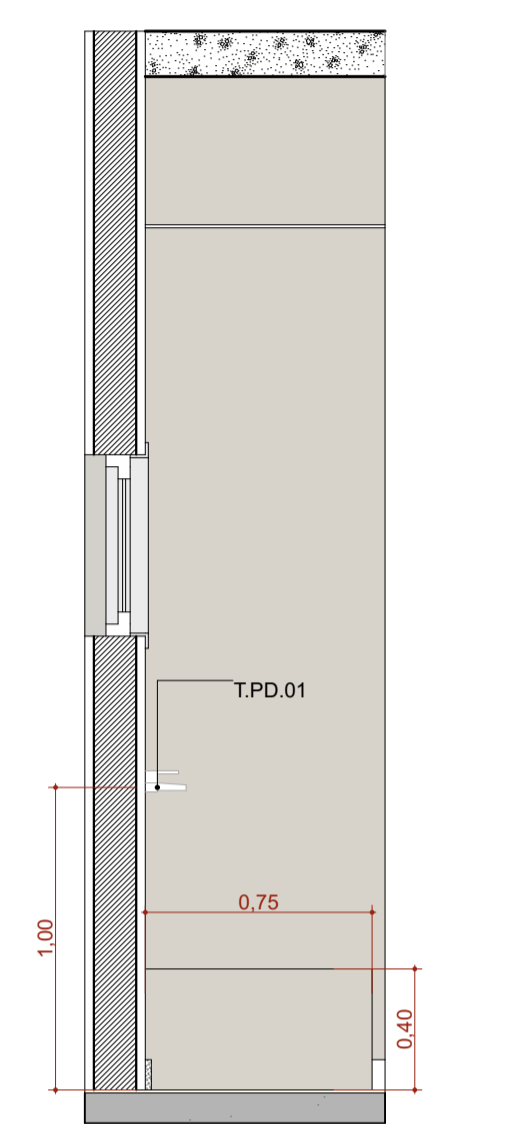
A.M.08 VISTA 3

Escala:1:25



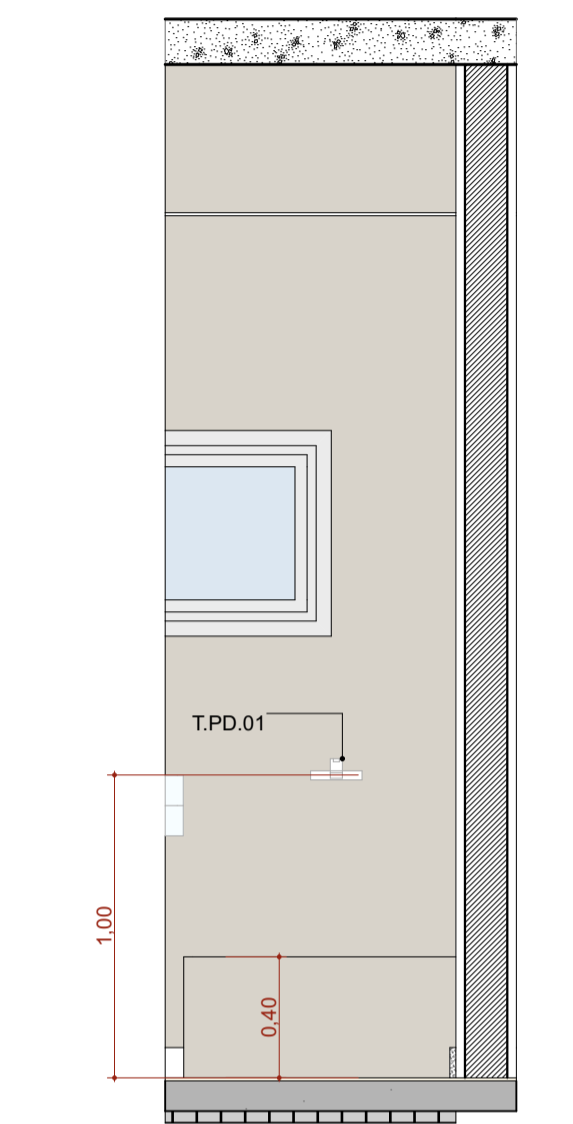
A.M.08 VISTA 4

Escala:1:25



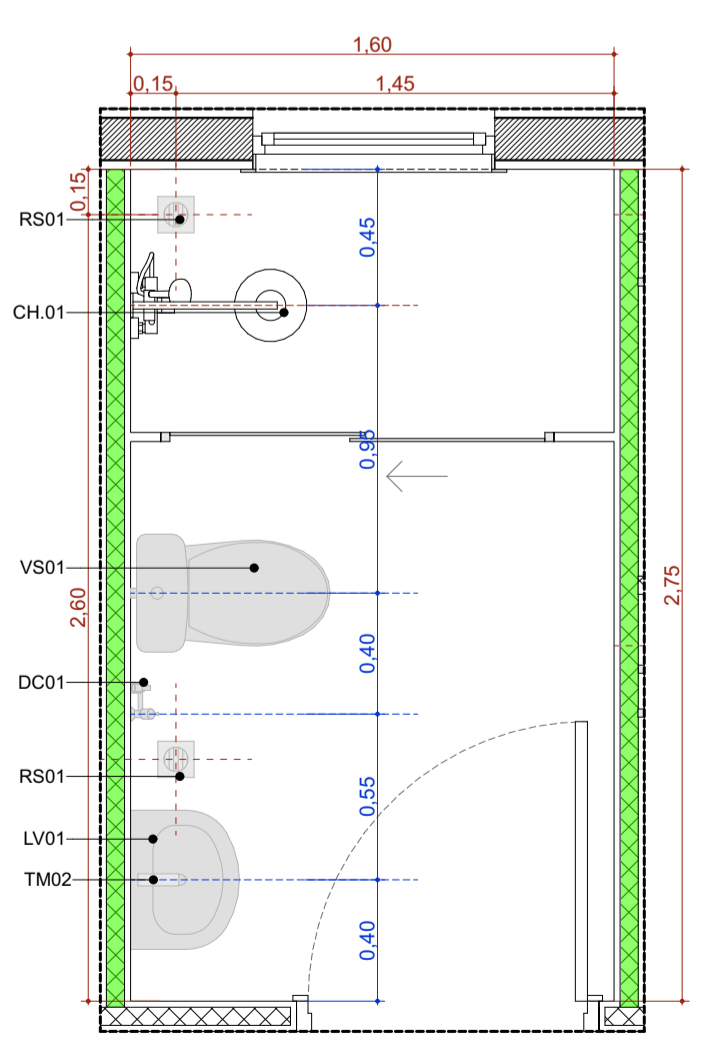
A.M.10 VISTA 1

Escala:1:25



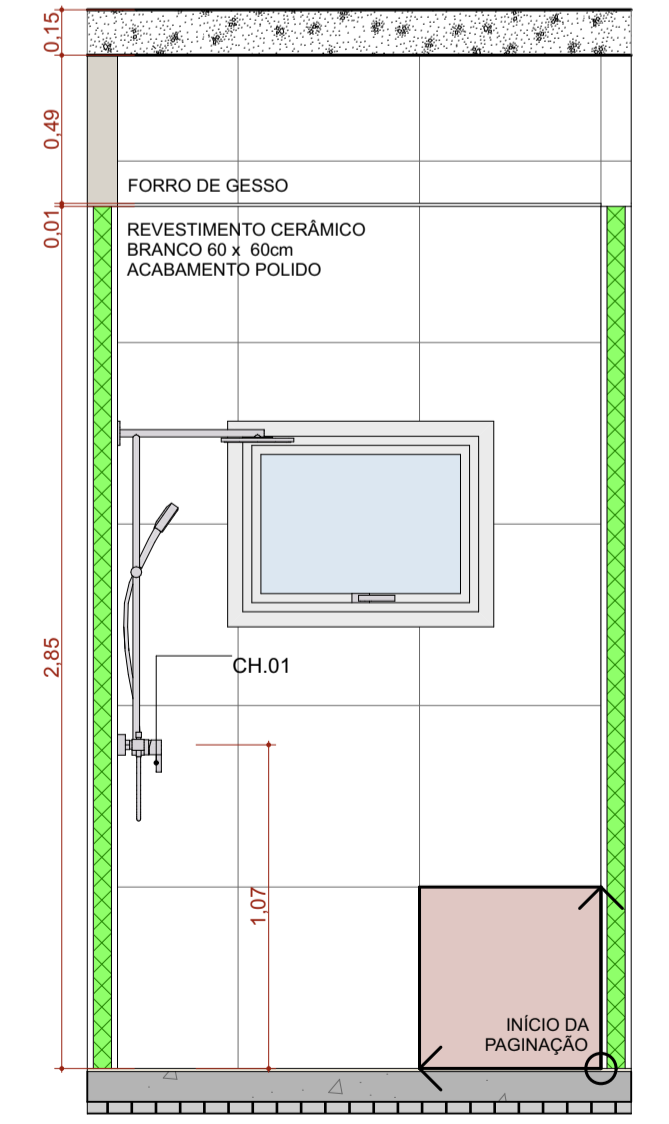
A.M.10 VISTA 2

Escala:1:25



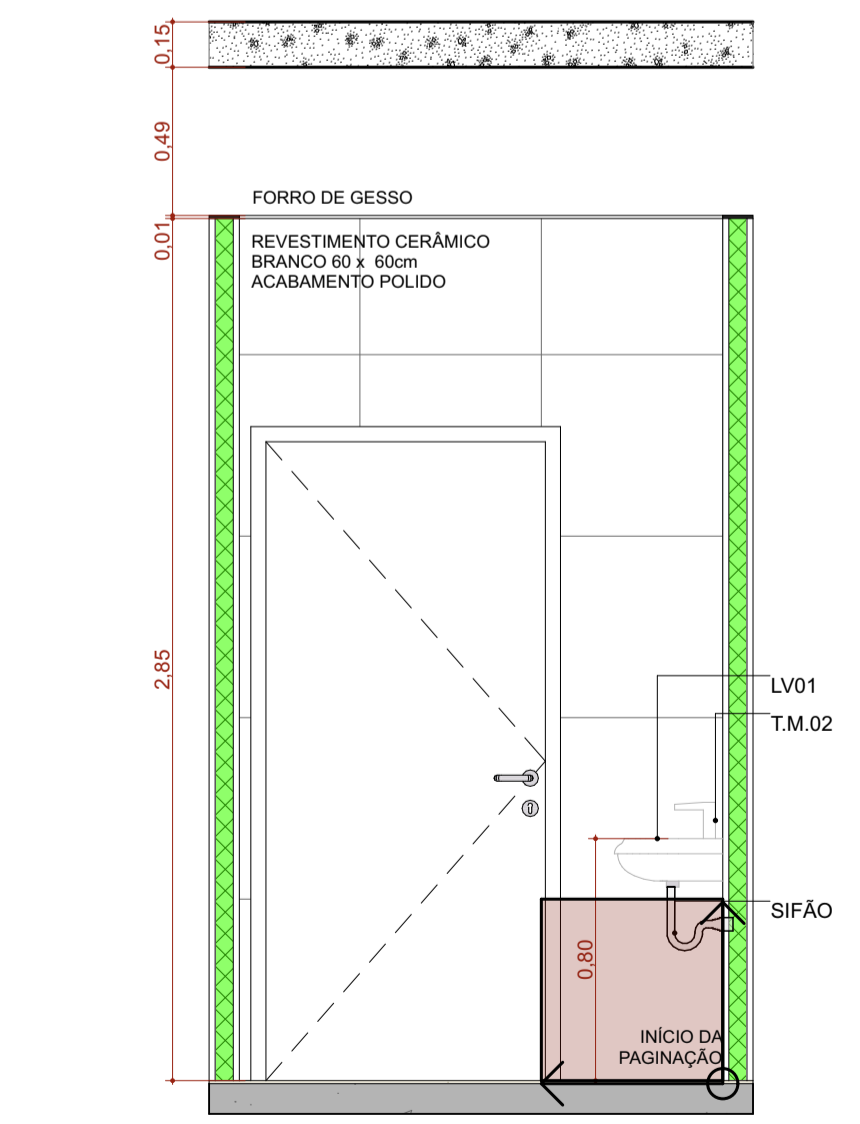
A.M.9 Banh. Func. Fem.

Escala:1:25



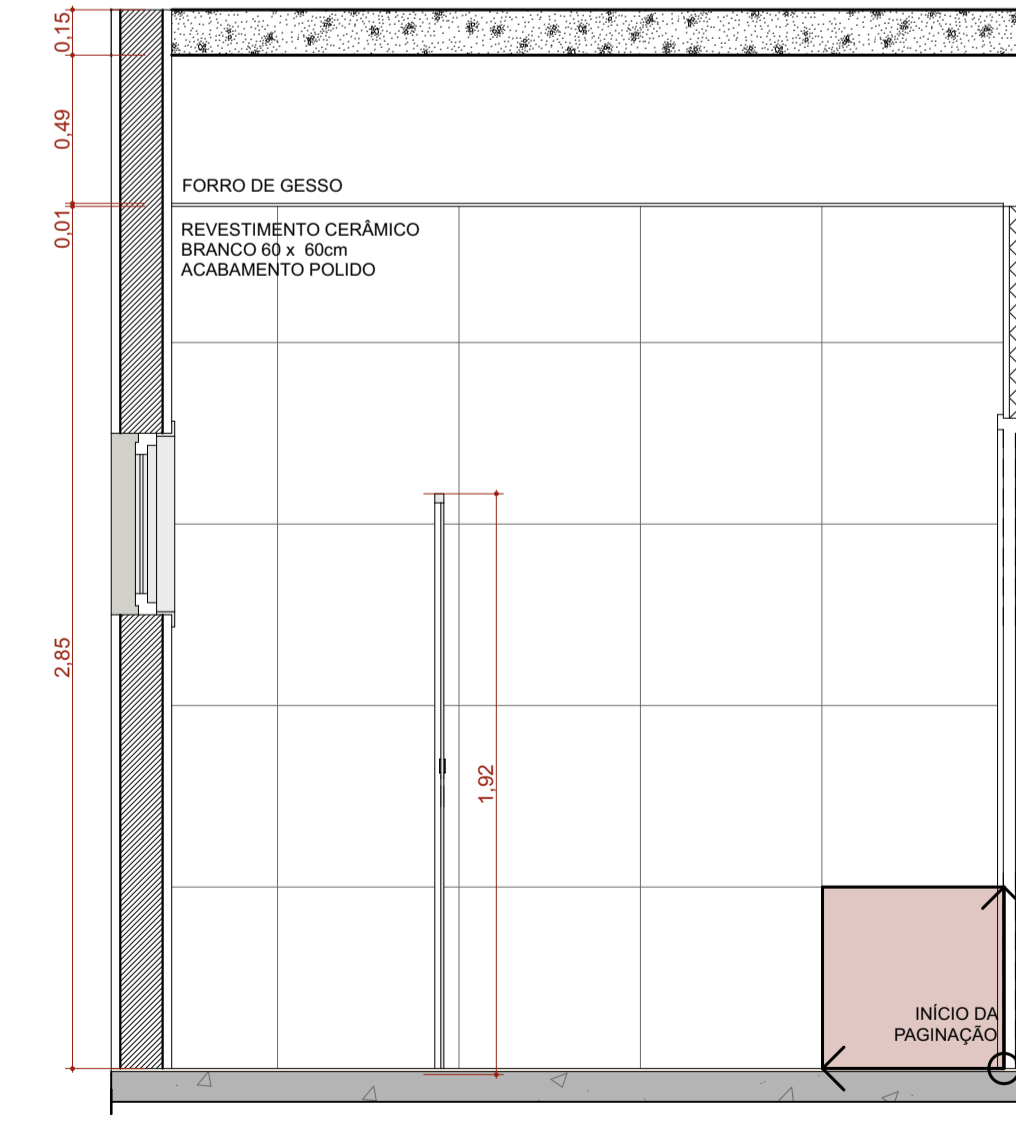
A.M.09 VISTA 1

Escala:1:25



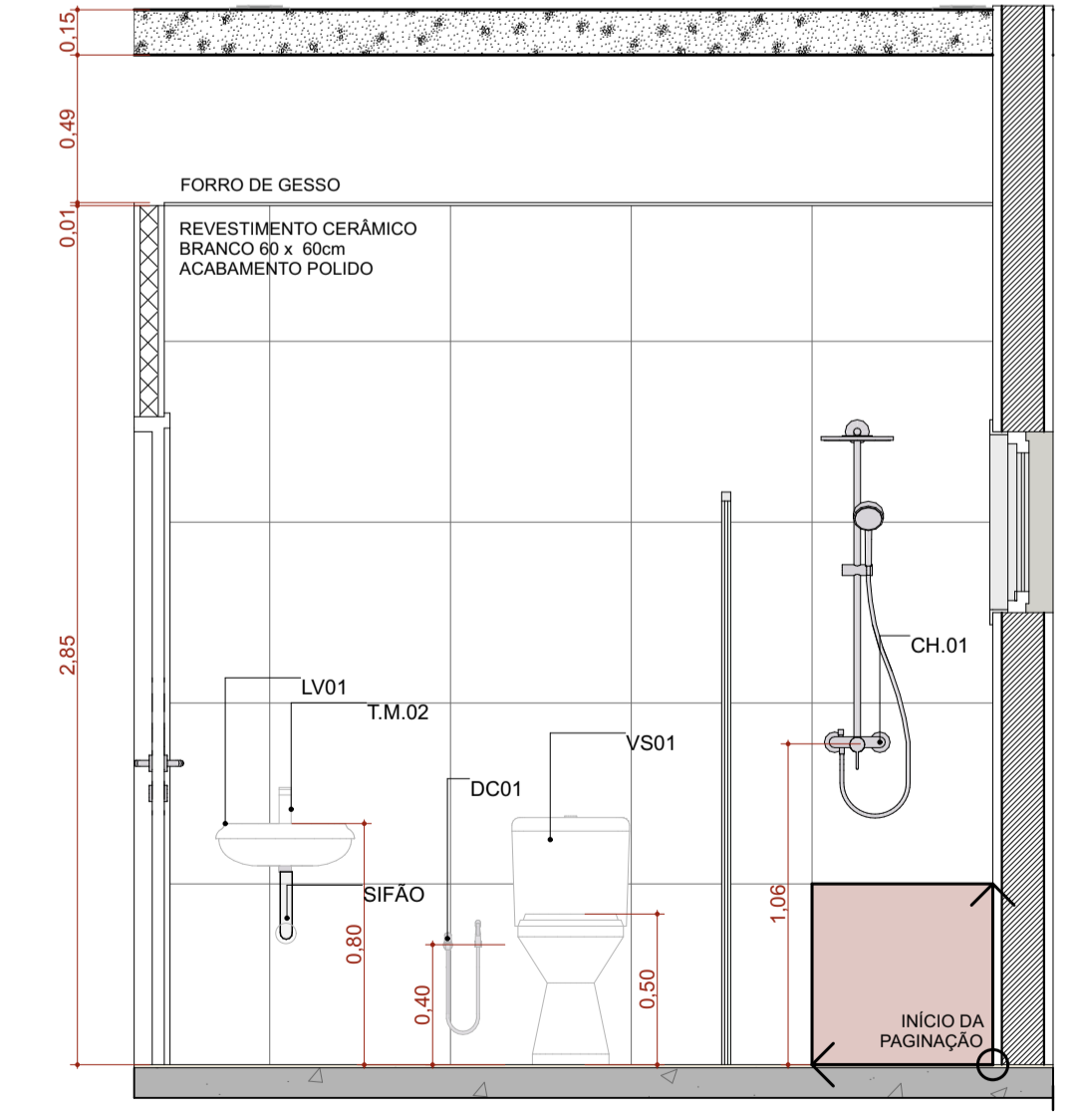
A.M.09 VISTA 2

Escala:1:25



A.M.09 VISTA 3

Escala:1:25



A.M.09 VISTA 4

Escala:1:25

TÍTULO DO PROJETO
UNIDADE BÁSICA DE SAÚDE - PORTE 1

PROPRIETÁRIO
MINISTÉRIO DA SAÚDE
SECRETARIA DE ATENÇÃO PRIMÁRIA À SAÚDE

CNPJ
00.394.544/0108-14

ENDEREÇO
Secretaria de Atenção Primária à Saúde
Esplanada dos Ministérios Bloco G Edifício Sede - Ministério da Saúde
CEP 70.058-900 - Brasília-DF

TÍTULO DA PRANCHA

DETALHAMENTO ÁREAS MOLHADAS 02

DESCRIÇÃO DA ETAPA

PROJETO EXECUTIVO

NOME: PRANCHA - ARQUIVO
MS_UBS1_PE_AQ_12.12_R00

REVISÃO	UNIDADE	DATA	ESCALA
R01	METROS	04/09/2024	INDICADA

DIREITOS AUTORAIS RESERVADOS CONFORME LEGISLAÇÃO NACIONAL E INTERNACIONAL

FOLHA 01
84,10 x 59,40

